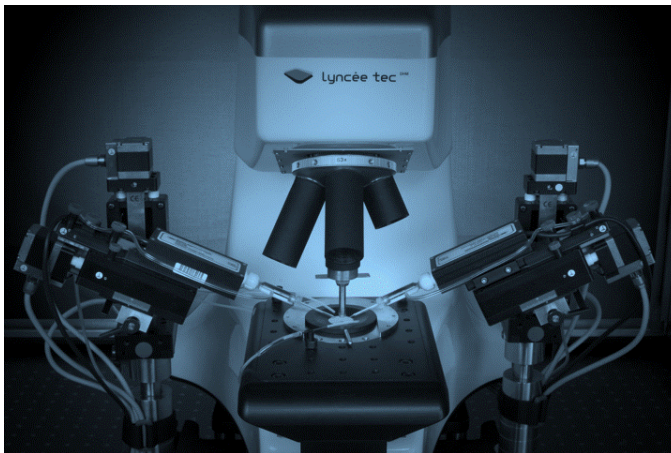




# Lyncée tec

**Our microscopes contribute  
to your long-lasting scientific impacts**

*The story of our first life sciences microscope*



## **An Old Faithful DHM®**

- Delivered **16 years ago**
- Upgraded with:
  - 194 fps camera
  - high-end PC for higher image processing power
- Operates in 2022 with **state-of-the-art performances.**

**Robust and reliable**



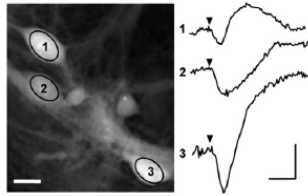
## **Dr Pascal Jourdain**

**Center for Psychiatric  
Neuroscience, CHUV  
university hospital, Cery,  
Switzerland**

*"I am proud to be one of the  
first owners of a DHM®.  
The innovative data we  
generate with our  
microscope trigger major  
contributions to Optical  
electrophysiology."*

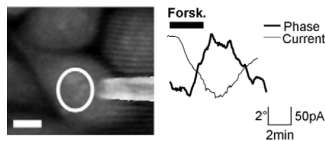
# A new scientific field born with DHM<sup>®</sup>: "OPTICAL electrophysiology"

Dr Jourdain has produced seminal publications with his *Old Faithful* DHM<sup>®</sup>:



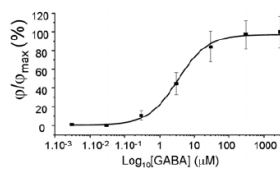
**Optical patch clamp demonstrated by measuring the activity of glutamatergic neurons without an electrode**

[Jourdain et al. J Neurosci](#)



**CFTR receptor activity monitoring by directly measuring transmembrane water fluxes**

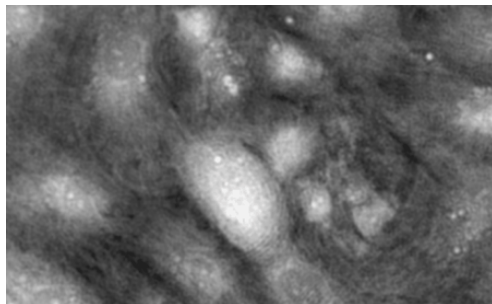
[Jourdain et al. JCS](#)



**Chloride current measurements, without fluorescence markers or patch clamp electrodes**

[Jourdain et al. PloS One](#)

## Discover our other DHM<sup>®</sup> applications



- [High content screening](#)
- [Cytotoxicity](#)
- [Cardiomyocytes dynamics](#)
- [Hematology](#)
- [Adipogenesis](#)
- [4D tracking](#)
- [Fluorescence correlation](#)

... and [much more](#)

## Book a live demo now

Do you want to discover our products while avoiding unnecessary travels?

For any DHM<sup>®</sup> purchase based on a remote live-demo, [Lyncée commits to plant trees](#) through the non-profit organization [OneTreePlanted](#)

Join our DHM users' forest of more than **5'000 trees!**

Contact us or book a live demo





## Meet us at ELM I 2022

Attend our **talk on Friday** the 6<sup>th</sup> of June  
at 10:05 am  
and visit Lyncée Tec **booth #19**

---

Lyncée Tec SA  
Innovation Park, PSE-A  
1015 Lausanne, Switzerland  
[info@lynceetec.com](mailto:info@lynceetec.com)



High-precision scientific equipment

Proudly manufactured by us in Switzerland

This email was sent to  
You received this email because you are registered with Lyncée Tec.

[Unsubscribe here](#)

© 2022 Lyncée Tec

[view this email in a browser](#)