



All-in-one for Biological Imaging! DHM, Epifluorescence and Confocal



Three modalities in a single instrument: QPM by DHM®, Epifluorescence, and confocal scanning

A new integration level has been reached with the DHM T1000-Fluo-Confocal delivered in November 2019 by Lyncée Tec to Prof WANG Gang from Department of Water and Soil Sciences at China Agriculture University in Beijing.

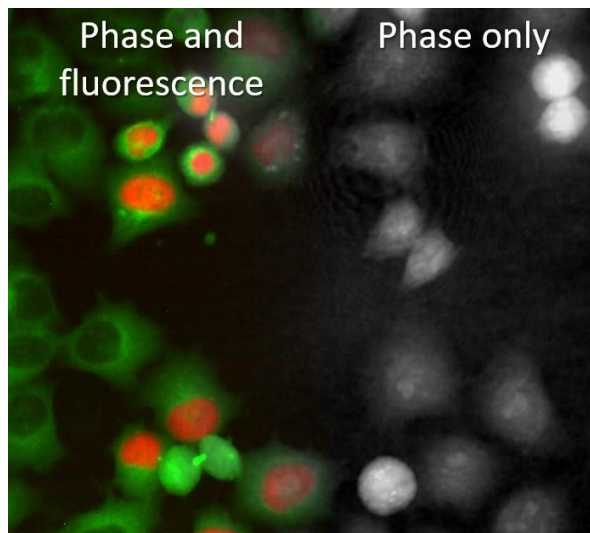
This unique system provides the most comprehensive bio-imaging information by combining three modalities: (1) Quantitative Phase Measurement (QPM) by DHM®, (2) epifluorescence measurements, and (3) a rescan confocal microscope module.

[Read more](#)

Testimonial

"Lyncée Tec is a professional team who developed a fully customized solution including both software and optical setup for our needs. This unique system enables us to obtain live 3D measurements as well as fluorescence and confocal scanning. In addition, what inspired us is the willingness of Lyncée team to continuously collaborate on challenging improvements on tailored solution."

-Prof. WANG Gang, China Agricultural University



[Read more](#)

Contact us for more details!

Lyncée Tec SA
Innovation Park
Bâtiment-A
CH-1015 Lausanne
Switzerland
info@lynceetec.com



This email was sent to
You received this email because you are registered with Lyncée Tec

[Unsubscribe here](#)

© 2019 Lyncée Tec